

OPEKO

PRODUCT CATALOGUE



MANUFACTURER

STANDARD ROUND POTS

Round pots are the most popular, universal shape chosen by nurserymen and gardeners, used for cultivation of both small and large plants. These pots are available in capacities up to 20 litres.



ID	V l.	cm	cm	245 cm	215 cm
RS20	20	35	30	1600	1300
RS15	15	32	26	2400	2000
RS12	12	31	24	2600	2250
RS10	10	28	22	3200	2700
RS7.5*	7,5	25	20	3400	2880
RS5*	5	22	18	5040	4080
RS4*	4	21	16	6300	5320
RS3	3	19	15	10260	8100
RS2.5*	2,5	18	14,5	8000	7000
RS2	2	17	13	14300	12000
RS1.5*	1,5	15	12	15120	12900
RS1*	1	13	10,4	20020	16550
RS0.7*	0,7	12	9	24510	18920
RS0.5*	0,5	11	8,5	32020	26250
RS0.4*	0,4	10	7,5	45100	38100

* Extended lead time



ROUND POTS WITH A RIM

A pot with a rim is an improved version of a standard round pot. Stronger edge has a specific function which allows for more secure grip of the container and its greater stabilization. This model is available in capacities up to 100 litres.

ID	V l.	cm	cm	245 cm	215 cm
RS100R	100	60	46	230	180
RS80R	80	56	43	300	240
RS60R	60	50	37	400	350
RS50R	50	47	36	540	450
RS45R	45	48	35	610	500
RS40R	40	46	34	570	470
RS35R	35	45	33	700	560
RS32R	32	43	30	550	440
RS30R	30	42	30	810	700
RS25R	25	40	28	1080	880
RS20R	20	35	29	1360	1130
RS15R	15	32	26	1760	1460
RS12R	12	31	24	2400	2000
RS10R	10	28	22	3250	2750
RS7.5R*	7,5	25	20	3780	3150
RS5R*	5	22,5	18	6120	5280
RS3R	3	19	15	10260	8100
RS2R	2	17	13	14300	12000
RS1.5R*	1,5	15	11,5	16200	14040

* Extended lead time



OPEKO
YOUR BUSINESS PARTNER



ROUND POTS

LOW & HIGH

These pots are dedicated to specific group of plants, depending on the type of their root system. Low pots are highly recommended for plants such as rhododendron or azalea, while high pots for various types of conifers.



ID	V l.	cm	cm	245 cm	215 cm
LOW ROUND POTS					
RL35	35	45,5	30	750	650
RL25	25	41	27	870	700
RL20	20	38	25	1200	1050
RL15	15	34	22	1660	1350
RL12R	12	34	19	1460	1200
RL7.5*	7,5	27	17,5	3280	2640
RL5*	5	24	15,5	4400	3680
RL4	4	22	14,5	6100	5000
RL3	3	20	13	7910	6400
RL2*	2	18	11,5	10920	8780
HIGH ROUND POTS					
RH12	12	26	26	2600	2150
RH9.5	9,5	25	24	3300	2700
RH7A*	7	24	22	3240	2700
RH5A*	5	21	20	4750	4000
RH4*	4	20	19	6000	5000
RH2*	2	14	15	9350	7680
RH1A*	1	13	11,5	22300	18800

* Extended lead time



SQUARELY-ROUND POTS



This kind of pot means spatial ergonomics. The narrowed, round bottom allows to easily arrange the containers in rows and save space both in cultivation and during transport or storage.

ID	V l.	cm	cm	245 cm	215 cm
SR5A	5	18X18	20	6000	5000
SR4A*	4	18X18	18	9000	7800
SR3A*	3	16X16	16	8400	7560
SR2A*	2	14X14	14	11200	9800
SR1A*	1	11X11	12,5	24750	21780
SR0.5A*	0,5	9X9	9,6	51480	40040

* Extended lead time



SQUARE POTS

STANDARD & HIGH

The square shape of pots allows to economically arrange the containers and insert them one into another. They are easy to transport and store meeting the most important needs of the plants grown in them.



ID					
SQUARE STANDARD POTS					
S4A*	4	18X18	18	7500	6750
S3A*	3	16X16	16	8190	6720
S2.5*	2,5	15X15	15	11760	9520
S2A*	2	14X14	14	11200	9520
S1A*	1	11X11	12	34650	29700
S0.5*	0,5	9X9	10	35040	28600
S0.5D*	0,5	9X9	9.6	51480	40040
HIGH SQUARE POTS					
HS25	25	33X33	34	1170	990
HS18	18	30,5X30,5	31	1680	1440
HS11	11	25X25	26	4000	3400
HS7*	7	21X21	23,5	2000	1600
HS5.6*	5,6	20X20	23	5700	4800
HS5A*	5	18X18	21,5	4950	4200
HS3.5*	3,5	16X16	20	8400	6930
HS3A*	3	13,5X13,5	23	8520	7410
HS2A*	2	12X12	19,5	13600	11520
HS2AH*	2	11X11	21,5	13360	11280/9200
HS1,7A*	1,7	11X11	19	16000	13500/10400
HS1.7AH*	1,7	10,5X10,5	21,5	9900	8415
HS1.25A*	1,25	11X11	15,5	19800	17320
HS0.8A*	0,8	9X9	14	22160	19300

* Extended lead time



SPECIALIZED POTS FOR BLUEBERRIES CULTIVATION

The blueberry pot has special designed bottom that ensures proper water drainage and constant air flow. This kind of bottom facilitates better development of the delicate root system and ensures its good condition.

ID	V l.	cm	cm	245 cm	215 cm
RS45B	45	48	35	610	500
RS35B	35	45	33	800	650
RS25B	25	39	30	960	760
RS7.5B*	7,5	26	21	4230	3780
RS5B*	5	23	18	6120	5280
RS3B*	3	19	15	10230	8580
RS2B*	2	16,5	14	11000	9300
RS1.5B*	1,5	15	12,5	12700	10800

* Extended lead time

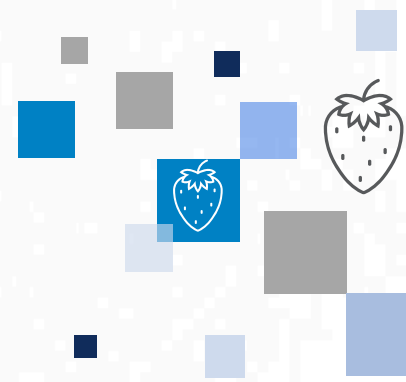
The raised bottom protects the plant from freezing. The dome shape improves durability of the container. Side holes drain water outside so it does not stay at the bottom of the pot.








OPEKO
YOUR BUSINESS PARTNER



SPECIALIZED POTS FOR RASPBERRIES AND STRAWBERRIES



This kind of pots have a perforated bottom with drainage holes, raised sides and feet which raise the container above the ground. This allows the seedlings to develop their root system freely.

ID	 l.	 cm	 cm	 245 cm	 215 cm
F7*	7	21	26,5	2000	1620
F5A*	5	19,5	21	4200	3600
F2A*	2	12	21	14800	12800
SC15	15	16 X 100	14	840	770

* Extended lead time

OPEKO pots for raspberries and strawberries cultivation are suitable for hydroponic plantations, which are based on placing pots with plants in specially adapted flood gutters.

They were created in response to the changing expectations of producers and with close cooperation with them.



SPECIALIZED POTS FOR CONIFERS CULTIVATION

The conifer pot meets all the most important needs of this type of plant. Its innovative structure allows for proper water drainage and roots aeration, which contribute to the beautiful appearance of the plants.

ID	V l.	cm	cm	245 cm	215 cm
RS25C	25	39	31	880	730
RS10C*	10	28	22	2240	1900
RS7.5C*	7,5	25	20	2800	2400

* Extended lead time



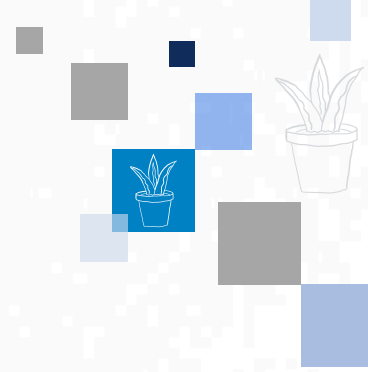
Openwork walls allow unlimited access to nutrients found in the soil. The durable, **crossed-shaped bottom** of the pot additionally aerates the plant and protects it from retaining excess water, which may lead to root rot.



OPEKO
YOUR BUSINESS PARTNER



HANGING POTS



A flower pot dedicated to hanging flowers cultivation such as fuchsias, surfinies, geraniums etc. They are beautiful decorative accent on the terrace or balcony. Available in white and terracotta.

ID	V l.	cm	cm	245 cm	215 cm
HP6.0	6	27	17	-	2400
HP4.7	4,7	25	16	-	3300
HANGER	X	X	50	-	10000





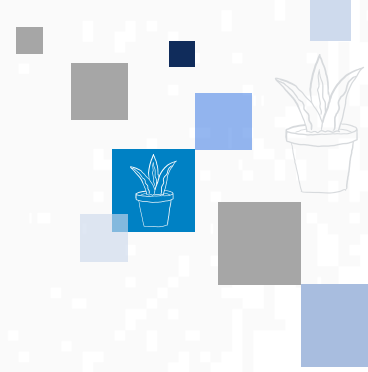
Bowl-type pots are an ideal solution for bulb plants cultivation such as chrysanthemums, crocuses or bonsai trees, which need a container with appropriate diameter for proper development.

ID	V l.	cm	cm	245 cm	215 cm
B4.7*	4,7	25	12	3520	3200
B3.5D*	3,5	23	11	4230	3600
B3D*	3	21	10,5	6000	5500
B3SA*	3	26,5	8,2	5120	4500
B2S*	3	22	11	6500	5750
B3*	3	22	11	5500	4025
B2.2D*	2,2	19	9,5	7840	6500
B2D*	2	22,5	9	7250	6000
B1.8S*	1,8	17	8,5	9900	7200


* Extended lead time



FOLDABLE CRATES

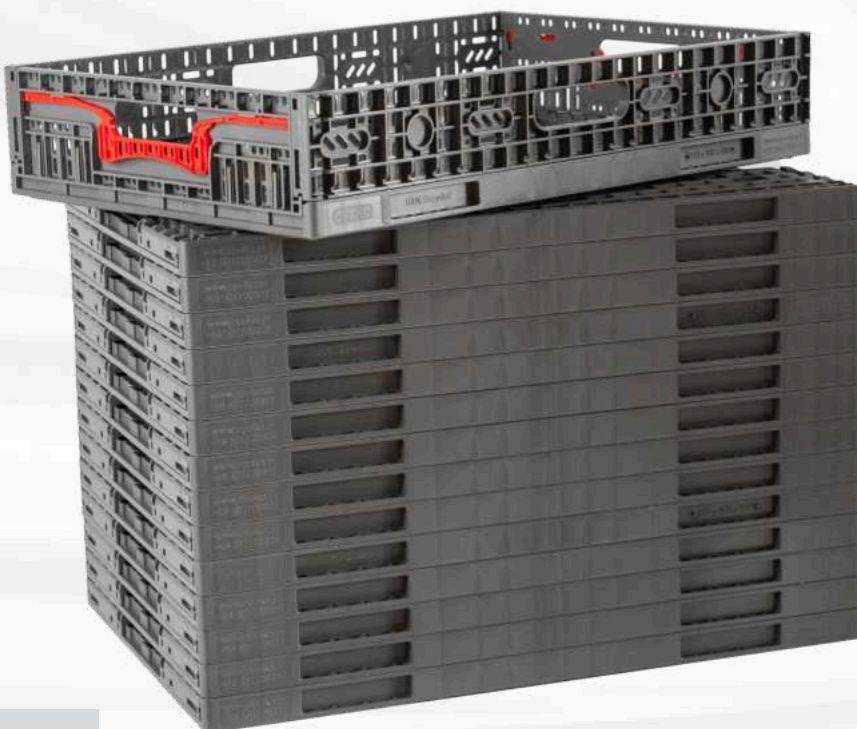


Foldable crates are a modern solution that combines durability and multifunctionality, being an excellent choice for people looking for practical storage and transport options.

ID	Vol. [l.]	Length [mm]	Width [mm]	Height [mm]	 215 cm
SK110	23	600	400	110	280
SK150	27	600	400	150	280




Thanks to their design, they can be easily folded and unfolded, which allows for significant space savings when not in use. Polypropylene from which they are made guarantees high resistance to mechanical damage, which makes them ideal for a wide range of applications, from industry to home use. Moreover, foldable crates can be used multiple times without losing their properties.



FLEXIBLE BASKETS




Stylish and practical containers with a very wide range of uses. They are ideal for transporting liquids, bulk goods and everyday items. Made of durable, weather-resistant material.

ID	Vol. [l.]	Diameter [cm]	Height [cm]	 215 cm
PE30	30	41	31	600

OPEKO flexible containers combine the stability and load-bearing capacity of a metal bucket with the flexibility of a textile bag. A perfect solution for both home and garden use. Large capacity allows to store many things at once. Handy and very durable handles allow to carry any type of items freely.



 Headquarters | Sales & Production
Obwodowa 15, 23-200 Kraśnik | Poland

 www.opeko.pl

 sales@opeko.pl

 +48 789 434 704

